



HIAROA - Whare Ako 1-2

Whare Ako 1

Mā Mikaere

wmikaere@ngatapuwaee.school.nz

Whare Ako 2

Mā Ngamata

mngamata@ngatapuwaee.school.nz



“Kia manawa tītī!”

Ngā Kaupapa o tēnei

Wāhanga:

- ✚ *Te Reo Matatini*
 - Rāwekeweke rerenga
 - Pānui/Tuhituhi
 - Whakapakari Tuhi
- ✚ *Pāngarau*
 - Tōnati
 - Tau
- ✚ *Mahi Toi:*
 - Tamanuiterā
 - Mahuika

Te rāwekeweke rerenga kōrero

Tuhia mai te rerenga kōrero hōu nei:

Ngā whai wawewawe a Māui.

Tuhia mai te kupu 'Māui' kia 3-4 ngā wā:

Tāngia he pikitia o te rerenga kōrero:

Kutikutihia ngā kupu whakaranu kei raro rawa. Tāpia ki ngā pouaka nei, heoi whakatikahia te raupapa o te rerenga.

--	--	--	--



a Māui.

wawewawe

Ngā

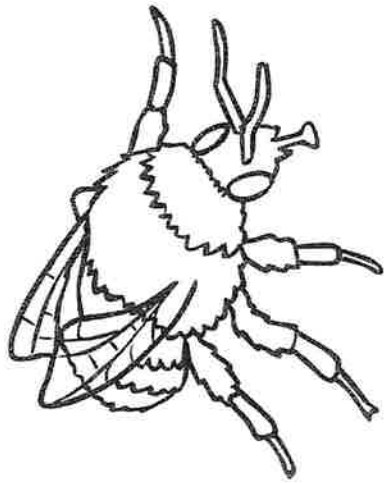
whai

Ingoa: _____



Pānui/Tuhi

Pānui	Tuhi	Tā pikitia
Tamanui-te-Rā		
Māui Tikitiki		
Hopukina te rā		
He rangi ataahua		



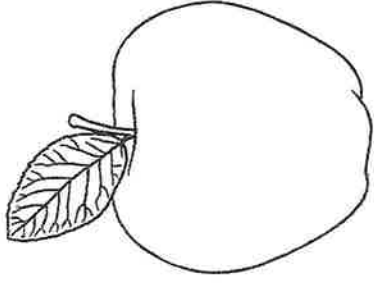
Pp

P

p

P

p



Aa

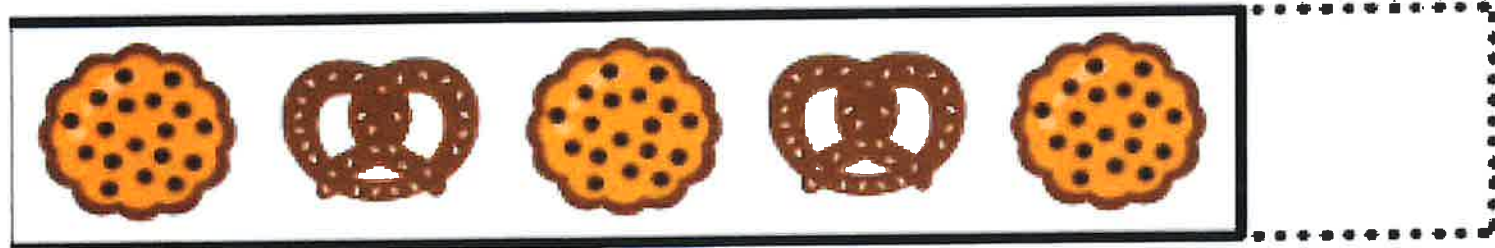
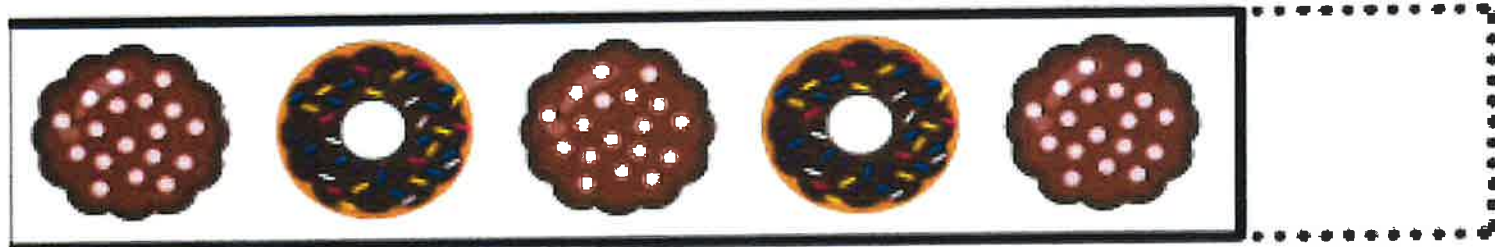
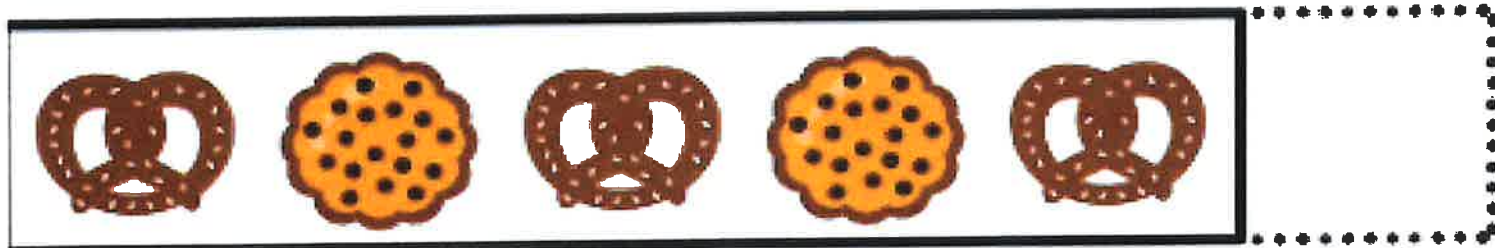
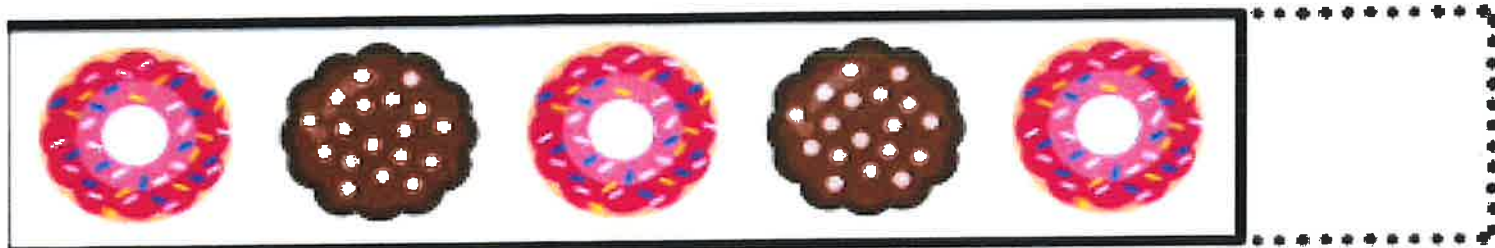
A

a

A

a

Tapahi i ngā tōnati o raro iho kia oti ai ngā tauira

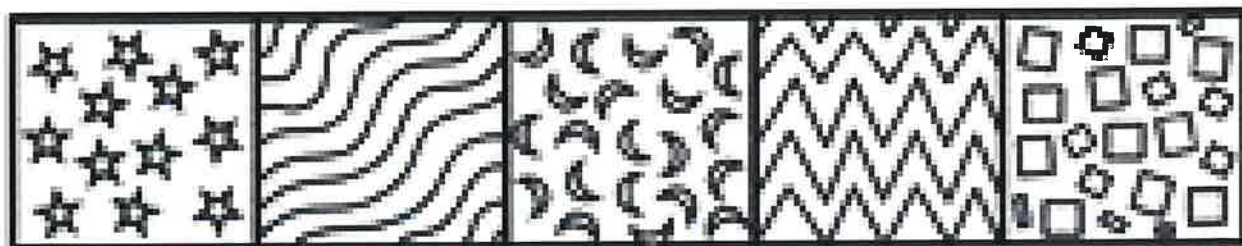
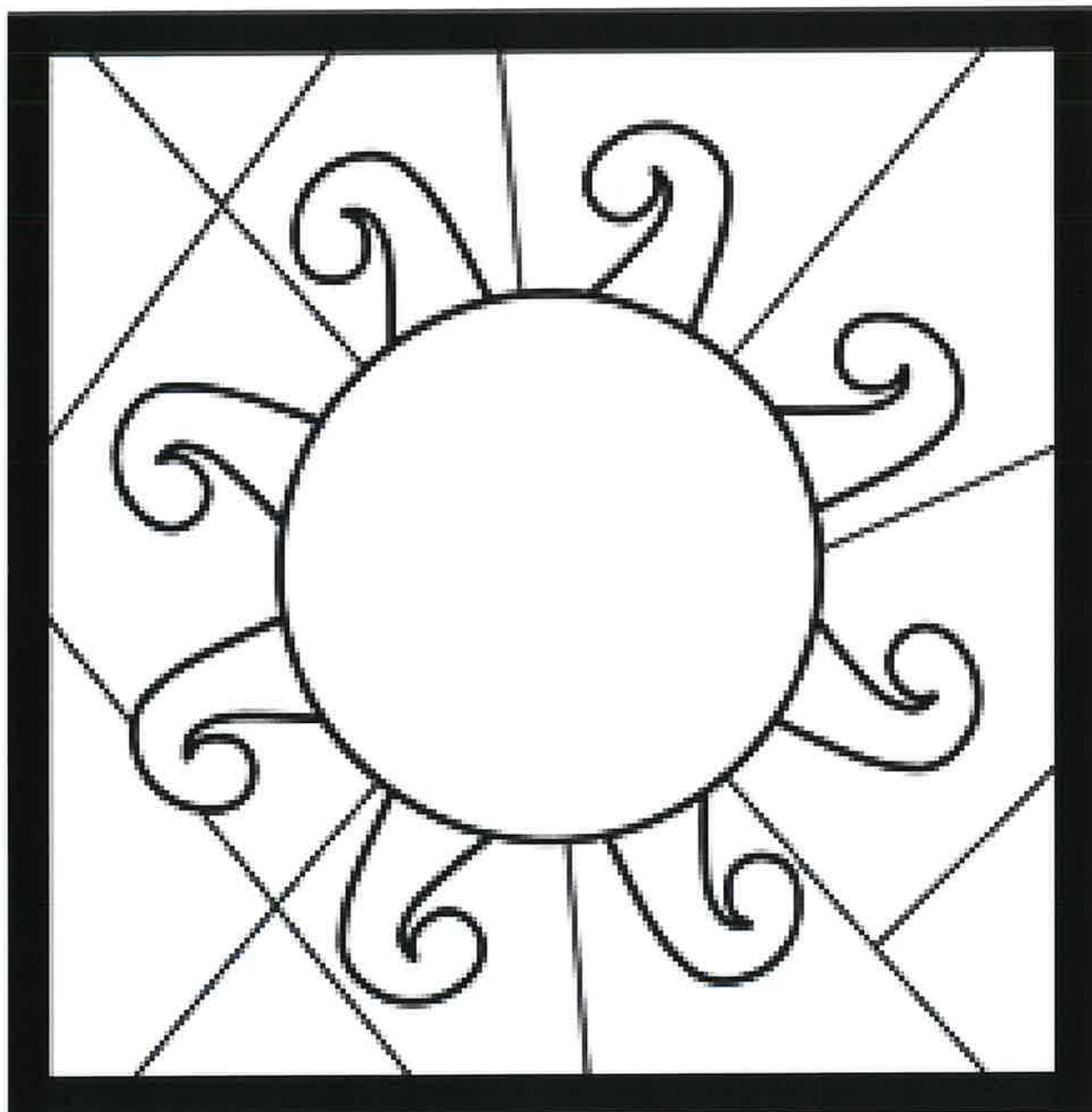


Name: _____

1 •	1 1 1 1 1 1 1
2 ••	2 2 2 2 2 2
3 •••	3 3 3 3 3 3
4 ••••	4 4 4 4 4 4
5 •••••	5 5 5 5 5 5
6 •••••	6 6 6 6 6 6
7 •••••	7 7 7 7 7 7
8 •••••	8 8 8 8 8 8
9 •••••	9 9 9 9 9 9
10 •••••	10 10 10 10 10

Mahi Toi:

Āta karakara kia whakarakei i tō Tamanuiterā - kia ātaahua, kia rerekē hoki ngā tae!



Mahi Toi: *Karakarahia tēnei pikitia, ko wai tēnei atua wahine??* _____

